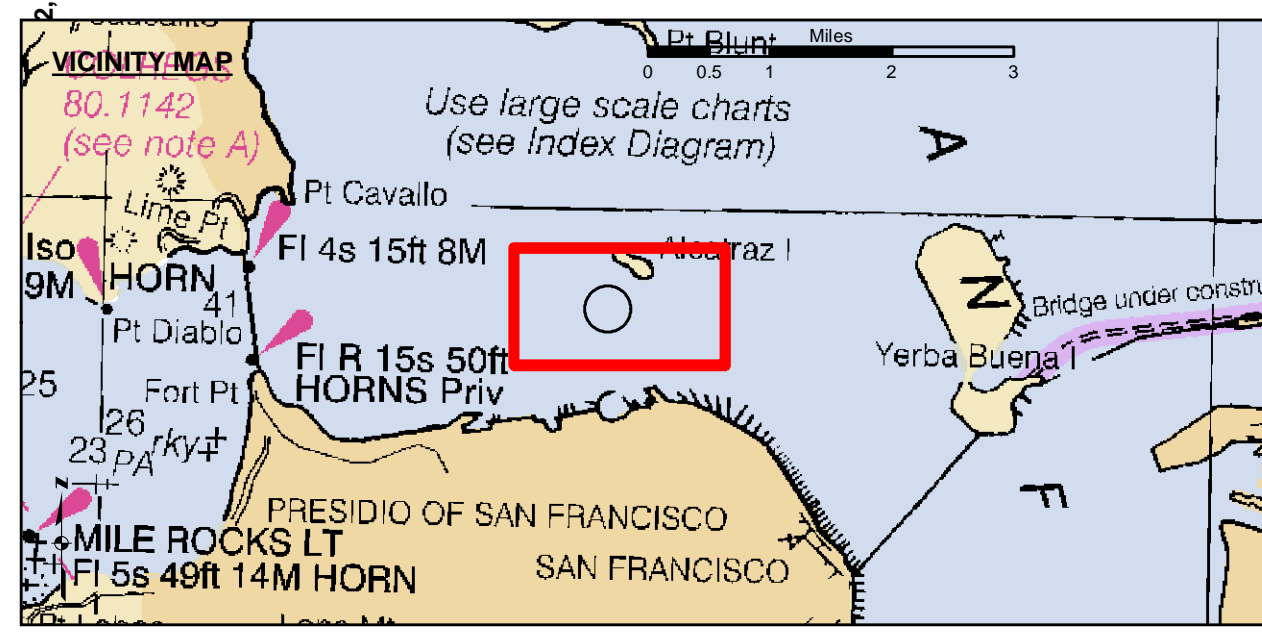
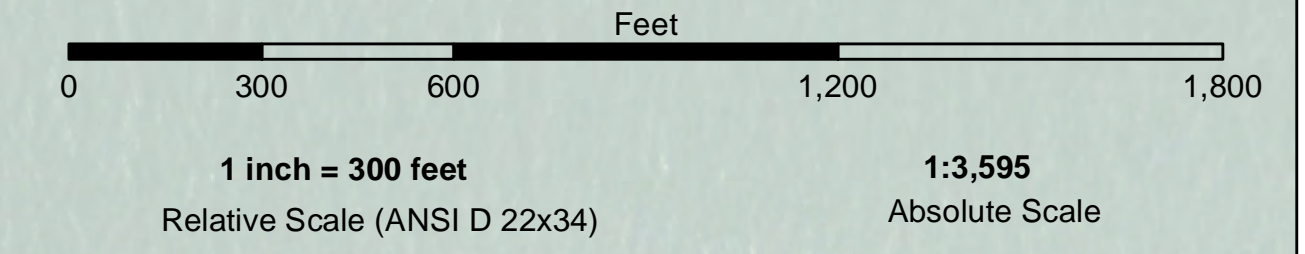


PRELIMINARY ISSUE
THIS PLAN ISSUED FOR
ADVANCE INFORMATION ONLY

LAMBERT COORDINATES		
POINT	X	Y
U.S.G.S. MON: 57 ELEV: -14.00	6,005,367	2,123,290
TRANSAMERICA BUILDING	6,011,912	2,117,586
ALCATRAZ DISPOSAL SITE - (SF-11)		
1,000 FT. RADIUS	6,005,935	2,127,235
ALCATRAZ LIGHT	6,008,552	2,129,010
ALCATRAZ BUOY	6,008,367	2,127,186



- Federal Navigation Channel
- Shoaling Area
- Placement Area
- Anchorage Area
- Wreck Area
- Submerged Wreck
- Zone_III_Angle_Points
- Beacon, General
- Obstruction Point
- Navigation Buoy
- Navigation Buoy
- Shoalest Sounding*
- Contour Lines
Every 10'
-20' to -120'

NOTES:
HORIZONTAL COORDINATE SYSTEM:
NORTH AMERICAN DATUM OF 1983 (NAD83), PROJECTED TO THE STATE PLANE COORDINATE SYSTEM (SPCS), CALIFORNIA ZONE III. DISTANCE UNITS IN U.S. FEET.

VERTICAL DATUM:
SOUNDINGS ARE SHOWN IN FEET AND INDICATE DEPTHS BELOW MEAN LOWER LOW WATER.

THE INFORMATION DEPICTED ON THIS MAP REPRESENTS THE RESULTS OF A SURVEY CONDUCTED ON THE DATE INDICATED AND CAN ONLY BE CONSIDERED TO REPRESENT THE GENERAL CONDITION EXISTING AT THAT TIME.

BASE MAPS ARE USDA NAIP 2010.
*SHOALEST SOUNDING PER QUARTER PER REACH

DRAWING NOT TO BE USED FOR NAVIGATION. ONLY CHANNEL CONDITION AT DATE OF SURVEY. THE LOCATION OF ALL NAVIGATION AIDS ARE BASED ON INFORMATION PROVIDED BY THE U.S. COAST GUARD. BUOY LOCATIONS REPRESENT THE POSITION OF THE SINKER ONLY. SOUNDINGS WERE TAKEN BY FATHOMETER AND ARE SHOWN TO THE NEAREST TENTH OF A FOOT. SOUNDINGS ARE BASED ON THE DATUM OF MEAN LOWER LOW WATER AT THE LOCALITY.

SURVEYED BY THE CORPS OF ENGINEERS.
THE PROJECT DEPTH IS -40 FEET AT MLLW.

PLANE GRID AND COORDINATES ARE BASED ON LAMBERT PROJECTION, NAD 83, ZONE III CALIFORNIA AS DESCRIBED IN SPECIAL PUBLICATION NO. 235, PUBLISHED BY THE NATIONAL OCEAN SURVEY.

HORIZONTAL GPS CONTROL:
COAST GUARD D-BEACON

VERTICAL CONTROL:
BENCHMARK: 180 1936
PID: H10702
MLLW = 3.972m (13.03ft)

NOAA STATION 9414290
TIDE GAUGE LOCATION: SAN FRANCISCO

US Army Corps of Engineers
San Francisco District
450 Golden Gate Ave.
San Francisco, CA 94102

DISCLAIMER: The United States Government furnishes Access to this information as a public service. It is not intended to be used for any purpose other than that for which it was prepared. The United States Government makes no warranty, expressed or implied, concerning the accuracy, completeness, or reliability of the information. The user is responsible for the results of any use of this information. The user is responsible for the results of any use of this information. The user is responsible for the results of any use of this information.

Prepared Under the Direction of: KEVIN P. ARNETT LT Colonel, C.E., District Engineer	Chart Date: Mar 06, 2023
Submittal: Hydro Survey Team Leader	Designed by: PDT
Recommendation: Chief, Hydro Survey Section	Checked by: PDT
Approved: Chief, Construction Branch	Drawn by: PDT

CALIFORNIA
SAN FRANCISCO BAY
ALCATRAZ DISPOSAL SITE-SF11
CONDITION SURVEY
23 FEBRUARY 2023

Sheet Reference Number 1 of 1